

# MaxSea v12.5 Description of New Features

## **Free NOAA Raster Charts Included with all MaxSea Products!**

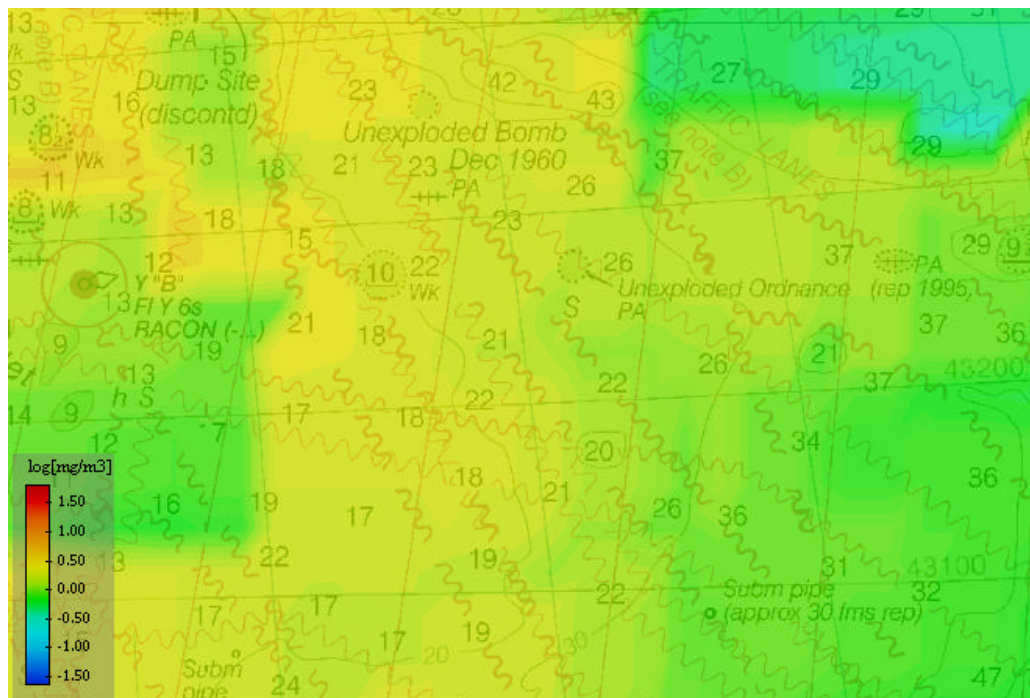
MaxSea will distribute a DVD containing ALL of the NOAA high quality raster charts for the US. FURUNO USA plans to ship this DVD free of charge with every v12.5 MaxSea version sold.

## **C-Map MAX compatibility (All MaxSea products)**

MaxSea NavNet versions now support C-Map NT MAX charts over the network with Navnet vx2. Now a user can have a C-Map NT Max card in any NavNet vx2 display and access this electronic cartography at their PC running MaxSea. Users may also connect their MaxSea PC to the C-MAP Multimedia reader, (orange USB box) or load charts onto MaxSea directly by using C-Map NT Max PC selector (v.8). The C-Map PC Planner / multimedia reader and NT Max PC are available from C-Map dealers.

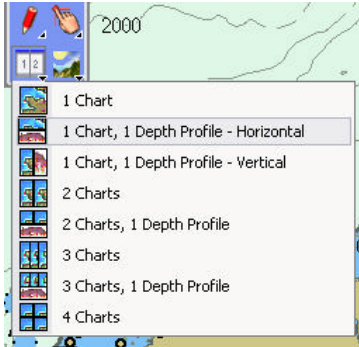
## **New Chopper Data (All MaxSea products)**

Chopper will now include the option to download “Chlorophyll” data, (sea transparency) which will help fishermen see areas of high plankton concentrations. This information is available worldwide at a resolution of .06 ° x 0.08°, and is updated once per day at 1300 GMT. As is the case with all other Chopper data, this data is available for download at no charge.



## **New Chart Window Management (All MaxSea products)**

MaxSea now has a new Window Management tool. With this new Chart Desktop button, you can easily organize your MaxSea desktop presentation (2 charts side-by-side with FLDP / sounder, for example.) Note that to show the depth profile window (sounder), you need to use this button.



## **Improved functionality with NavNet vx2 (Commander, Explorer, Professional)**

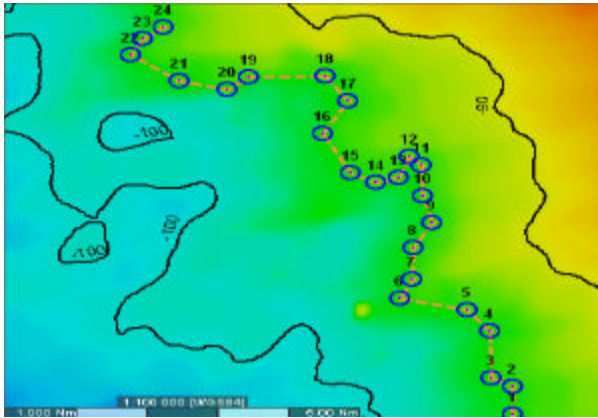
In addition to being able to see C-Map Max Charts over a NavNet network, MaxSea can also read the AIS sentences being broadcast over the Network (FA150 + NavNet vx2.) To get AIS targets on MaxSea, simply connect the FA150 to any NavNet display, and MaxSea will see the AIS targets automatically. The MaxSea Depth Profile window (Sounder) has been improved to match NavNet's easy operation. Now there are two modes for the sounder: NavNet Mode (simple) and MaxSea Mode (advanced)

## **Depth Profile Window (Commander/Explorer/Professional)**

This depth profile window now includes a History Mode. You can right click on any previously recorded track line and display its historical depth profile.

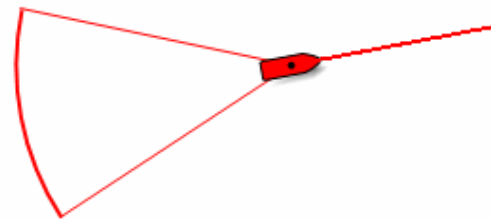
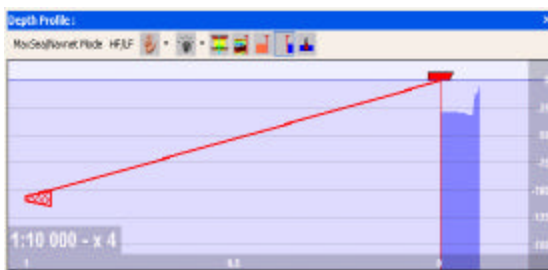
## Contour Line (Commander with 3D/Explorer/Professional)

MaxSea can build a route along a specific depth contour line. Just right-click anywhere on the chart (where you have 3D data available) and MaxSea can build a route following that depth contour line.



## Trawl Simulation (Commander/Explorer/Professional)

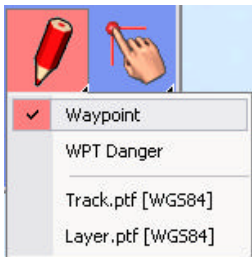
MaxSea now gives you the ability to enter parameters of your Trawl (wire length, wire tension,...) and will then display a simple estimation of the trawl position in the depth profile window and on the chart.



## Routes and Waypoints (All MaxSea products)

Route and Waypoint management and entry have been dramatically improved.

Waypoints and Marks entry - With MaxSea v12.5, you use the Pencil tool to enter both waypoints and marks. You can create as many WPT layers as you want (“Waypoint” and “WPT Danger” in the screenshot), which allows you to sort and differentiate your waypoints for easy management. The pencil tool is still used to draw marks, which are stored in the form of a PTF layer (“Track.ptf” and “Layer.ptf” in the screenshot). When you plot on a Waypoint Layer, the waypoints are automatically added to the WPT database.



Route entry and management - The “Quick Route” tool (below left) has been added to let users make a simple “Go to” or “point-and-shoot” route consisting of only one WPT destination. The Route Builder (below right) allows you to build a route using existing waypoints (click on created WPT) or Quick Waypoints (when you click anywhere on the chart). Note that if you click on an existing route with the “Quick Route” tool, it will activate it. If you double click on the “Quick Route” tool, it will de-activate any activated route.



In addition, you can now display as many routes on the plotter as you want. (Routes will no longer disappear when not active or selected.) The selected route (working route) appears highlighted in orange as shown in the example below.



## **Routing Module Improvements**

Wind Speed limitation - Are you planning a leisurely sailing trip and want to avoid winds in excess of 20 knots? Now with MaxSea, all you have to do is select the maximum wind force you want to sail in, and MaxSea's routing module will calculate a route that will avoid winds greater than a user specified velocity. For sailing yacht races, you can remove this constraint to achieve the maximum performance from your boat. MaxSea's new weather routing is truly safety-oriented, and provides a powerful, easy to use tool to help you decide to set sail or stay in port.

Exclusion Area - Version 12.5 enables you to create pre-selected zones to be avoided when launching a routing calculation. This new feature allows you to calculate a much safer route, and avoid danger zones, exclusion zones, shallow water, etc.

## **Performance Module**

MaxSea is recognized around the world for its excellent weather routing capability. However, it is sometimes difficult to obtain the polar tables for your own boat, which are necessary to optimize MaxSea's weather routing performance. Now, MaxSea version 12.5 will automatically create these polar tables for you as you sail your boat. MaxSea allows you to easily activate and deactivate this function from the performance menu when you leave and return to port. (Professional racers will still be able to manually modify the appropriate file, if required.)

## **Navigator + MAXARPA module now incorporates AIS capabilities!**

MaxSea introduces AIS "light" capability for the MAXARPA module, which is available for Navigator+. With this new enhancement, you can now display AIS information graphically on the chart, which will help you immediately identify ships that are too close, identify potential dangerous crossings, or simulate navigational maneuvers to avoid a potential collision. A low-cost receiver with Navigator+ and the MaxSea MAXARPA module provides seafarers with a powerful tool to anticipate and avoid dangerous situations with commercial ships using a graphical symbol of the AIS targets on the charts. In darkness, fog or heavy rain, it is a tool that you cannot afford to be without. The Mobiles module (Commander/Explorer/Professional) will remain un-changed.

## **MaxSea v12.5 Explanation of Chart Compatibility**

As part of a new licensing agreement between C-Map and MaxSea/MapMedia, MaxSea will no longer be capable of displaying both MapMedia raster charts and C-Map vector charts on the same software at the same time. This limitation forces MaxSea to divide the software products into two types:

### **1) C-Map Version:**

May use C-Map NT+, C-Map NT MAX, C-Map CM93 (includes NOAA S57, but not free), Maptech/BSB charts (including free NOAA Raster charts) and MapMedia Bathymetry data (3D). Please note that C-Map will distribute NOAA S57 data for a fee to be advised later by C-Map.

### **2) MapMedia Version:**

May use MapMedia 1 and MapMedia 2 Navigation raster charts, ARCS raster (British Admiralty), Maptech/BSB (including free NOAA Raster charts), Softcharts and MapMedia Bathymetry data (3D).

**The product that will be marketed and sold in the USA is the CMap version**, (#1 above) which should satisfy most US customer requirements, especially owners of MaxSea NavNet systems. This version will also work with Maptech charts, and will work fine with **FREE NOAA US raster charts**. CM-93 compatibility should satisfy the needs of high-end yacht owners as well. Note that we cannot offer the free MapMedia S57 discs with this product any longer. S57 will be available for a nominal fee from C-Map only. Fortunately, free US NOAA raster charts offer better coverage and much better looking charts, and are MUCH easier to load and replace.

Customers that specifically want MapMedia charts will have to special order the MapMedia MaxSea software (#2 above.) Note that they will not have access to any vector charts (No C-Map MAX/NT, no CM-93). This will be considered a “special order” item. If customers insist on having MapMedia chart compatibility, they can not use C-Map charts.